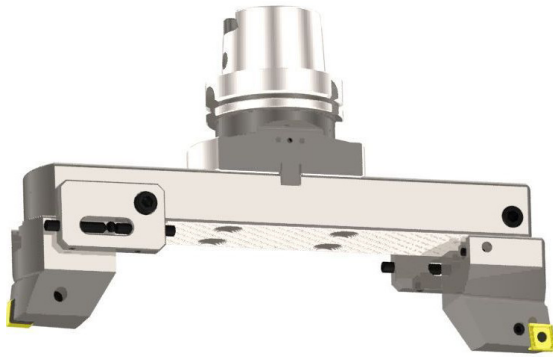
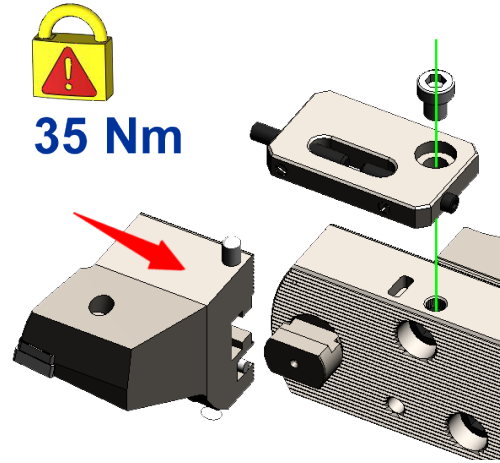
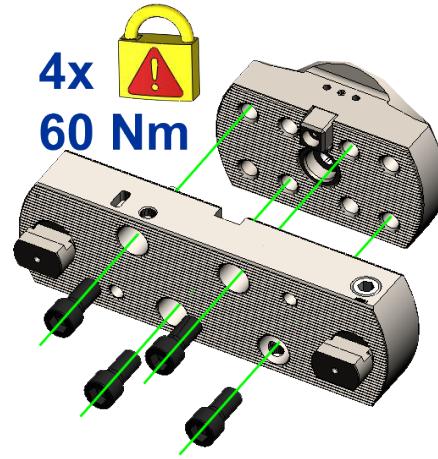


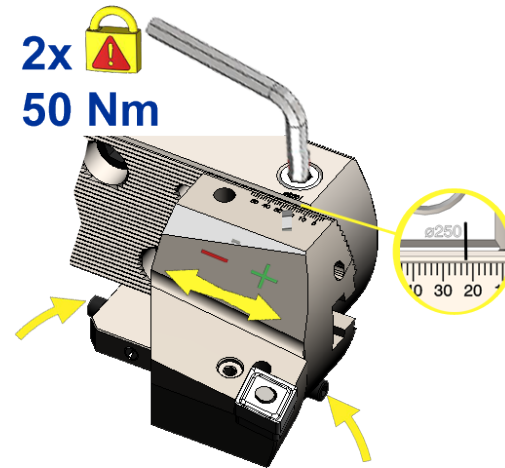
INSTRUCTION MANUAL
BRIDGE TOOLS
 Ø 150 - 655 mm



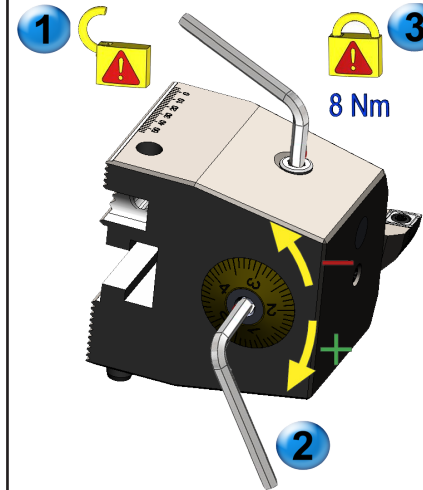
assembling



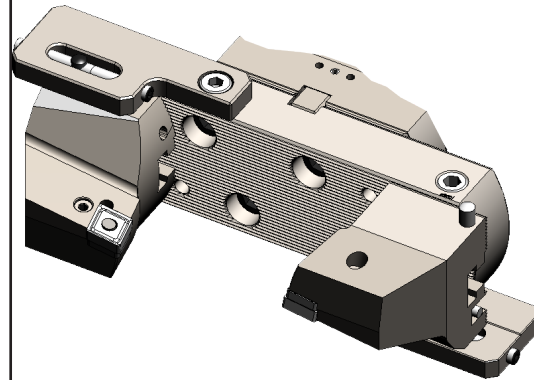
pre adjustment



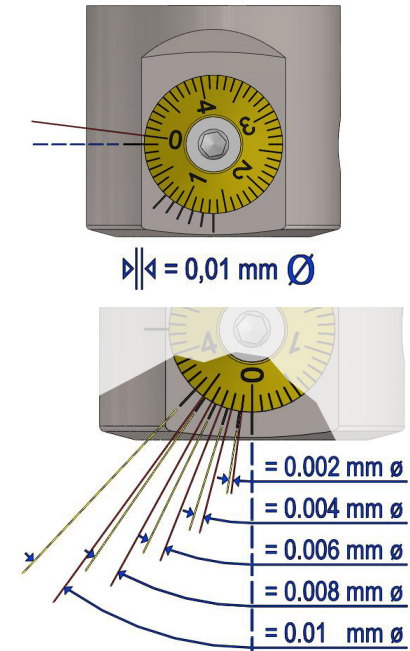
adjustment fine boring



pin turning



scale / vernier



revolution

diameter	max. rpm
Ø150-205	1.250
Ø200-255	1.000
Ø250-305	850
Ø300-355	700
Ø350-405	600
Ø400-455	530
Ø450-505	480
Ø500-555	440
Ø550-605	400
Ø600-655	360

SWISS+TOOLS

SWISS TOOL SYSTEMS AG Phone: +41 (0) 71 634 85 20
 Wydenstrasse 28 Fax: +41 (0) 71 634 85 29
 CH-8575 Bürglen www.swisstools.org