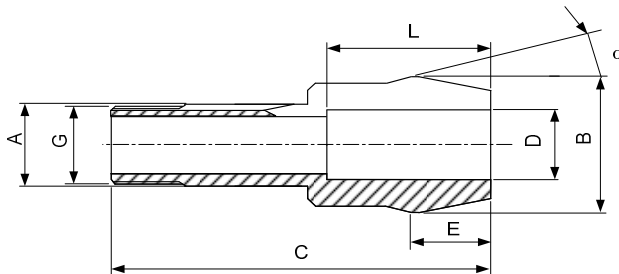


Pinces tirées - Zugspannzangen - Pull-type collets

Fig. 1



Alésage à cran  
 Stufenbohrung  
 Step bore

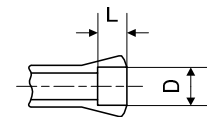
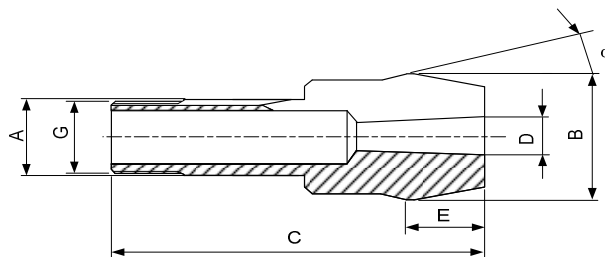


Fig. 2



Type	Art.	A	B	C	E	G	$\alpha$	D min-max	L	Fig.
B32/B45	72-2005	32	53	148.5	32.5	$\emptyset$ 29.7x1.693 $\nabla$ 45°/5°	15°	1.00...24.00 24.01...40.00	- 80	1
	72-93409 26)	32	53	148.5	32.5	$\emptyset$ 29.7x1.693 $\nabla$ 45°/5°	15°	Morse DIN228 MK-1	-	2
	72-93410 26)	32	53	148.5	32.5	$\emptyset$ 29.7x1.693 $\nabla$ 45°/5°	15°	Morse DIN228 MK-2	-	2
	72-93411 26)	32	53	148.5	32.5	$\emptyset$ 29.7x1.693 $\nabla$ 45°/5°	15°	Morse DIN228 MK-3	-	2
	72-93412 26)	32	53	173	57	$\emptyset$ 29.7x1.693 $\nabla$ 45°/5°	15°	Morse DIN228 MK-4	107	2

Alésages standards (rond, carré, six-pans) selon liste de prix. Autres alésages sur demande.  
 Standardbohrungen (rund, vierkant, sechskant) gemäss Preisliste. Andere Bohrungen auf Anfrage.  
 Standard bores (round, square, hexagonal) according to price list. Other bores on request.

26) Sur demande - Auf Anfrage - On request