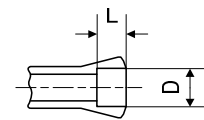


Pinces tirées - Zugspannzangen - Pull-type collets



Alésage à cran
 Stufenbohrung
 Step bore



| Type | Art. | A | B | C | E | G | α | D min-max | L | Fig. |
|------|----------------|----|------|------|---|-----------------------|-----|-------------------|------|------|
| W25 | 80-5 | 25 | 33.7 | 97.6 | - | ∅ 24.7x1.693 ↯ 45°/5° | 15° | 0.30...19.05 | - | 1 |
| | | | | | | | | 19.06...21.00 | 35 | |
| | | | | | | | | 21) 21.01...21.50 | 16.5 | |
| | | | | | | | | 21) 21.51...22.00 | 16 | |
| | | | | | | | | 21) 22.01...23.00 | 15.5 | |
| | | | | | | | | 21) 23.01...23.50 | 15 | |
| | | | | | | | | 21) 23.51...24.00 | 14.5 | |
| | | | | | | | | 21) 24.01...24.50 | 13.5 | |
| | | | | | | | | 21) 24.51...25.00 | 12.5 | |
| | | | | | | | | 21) 25.01...25.40 | 11.5 | |
| | | | | | | | | 25.41...25.50 | 11.5 | |
| | | | | | | | | 25.51...26.00 | 10.5 | |
| | 80-700 | 25 | 33.7 | 97.6 | - | ∅ 24.7x1.693 ↯ 45°/5° | 15° | 21.01...25.40 | 30 | 2 |
| | 10) 80-5 | | | | | | | | | |
| | 80-1923 | 25 | 35 | 94 | - | M25x1 | 16° | 0.50...17.00 | - | 3 |

Alésages standards (rond, carré, six-pans) selon liste de prix. Autres alésages sur demande.
 Standardbohrungen (rund, vierkant, sechskant) gemäss Preisliste. Andere Bohrungen auf Anfrage.
 Standard bores (round, square, hexagonal) according to price list. Other bores on request.

10) Article de base - Basisartikel - Basic item

21) Dimensions non standard, voir 80-700 - Keine Standardabmessung, siehe 80-700 -
 Non standard bores, see 80-700